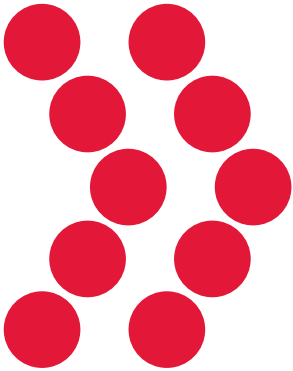




Steel Fire Sprinkler Pipe





# Wheatland Tube

## Fire Sprinkler Products

Wheatland Tube began producing steel fire sprinkler pipe in 1931, and today offers the most complete line of products in the industry. Engineers and contractors across the continent depend on us for steel fire sprinkler pipe and a number of proprietary products — always in stock and ready to deliver.

### **100% Compatibility**

We guarantee our steel pipe is 100% compatible with fire protection systems that use only steel pipe. Why risk incompatibility? Wheatland's complete line of steel sprinkler pipe makes design easy and brings you peace of mind.\*

### **Accurate and Efficient**

Our products help you work safer and smarter — not harder. With our extensive in-house capabilities, we offer the shortest production cycle times in the industry, and we deliver to you accurately and on time, every time.

\*Wheatland Tube has never warranted compatibility between its steel pipe products and CPVC products.

### **Green and Sustainable**

Our steel fire sprinkler pipe contains recycled steel and provides decades of reliable service. At the end of its life, the steel may be almost fully recycled, supporting your green policies.

### **Zekelman Industries**

Wheatland Tube is a division of Zekelman Industries, the largest independent manufacturer of steel hollow structural sections (HSS) and steel pipe in North America. We leverage our 100-plus years of pipe and tube manufacturing experience and expertise to produce 2 million tons of pipe and tube annually. Backed by Zekelman Industries, you can count on Wheatland for **strength, innovation and service** — bringing exceptional value to your business.

## WLS Schedule 30 Light Wall



# A faster alternative to Schedule 40

Wheatland's WLS Schedule 30 steel fire sprinkler pipe is a threadable, light-wall steel pipe approved for working pressures up to 300 psi.

### TECHNICAL DATA

NPS	NOM ID	WT./FT. (LBS.)	WT./FT. H <sub>2</sub> O FILLED	PCS./1 TON LIFT 21'	PCS./1 TON LIFT 25'
1	1.087	1.462	1.865	70	60
1¼	1.426	1.928	2.621	55	45
1½	1.650	2.370	3.297	45	40
2	2.125	3.004	4.542	35	30

Finished in black or hot-dip galvanized

When hot-dip galvanized, approved for dry system applications

Available in standard 21' or 25' lengths; custom lengths may be ordered

Saves on freight and installation costs

### SPECIFICATIONS

NPS	NOM OD	NOM ID			UL CRR*		Nominal wt./ft.	WLS	
		WLS	Schedule 10	Schedule 40	WLS	Schedule 40		Pcs./Lift 21'	Pcs./Lift 25'
1	1.315	1.087	—	1.049	0.57	1.00	1.462	70	60
1¼	1.660	1.426	1.442	1.380	0.46	1.00	1.928	55	45
1½	1.900	1.650	1.682	1.610	0.64	1.00	2.370	45	40
2	2.375	2.125	2.157	2.067	0.52	1.00	3.004	35	30

\* Calculated using Standard UL CRR formula, UL Fire Protection Directory, Category VIZY. The CRR is a ratio value used to measure the ability of a pipe to withstand corrosion. Threaded Schedule 40 steel pipe is used as the benchmark (value of 1.0).

#### WLS Meets or Exceeds These Standards:

- ASTM A795, Type F, Grade A
- Hot-dip galvanized finish meets FM requirements for dry systems
- UL® and C-UL Listed and FM Approved
- NFPA® 13
- ANSI®/ASME B1.20.1 pipe threads

# Mega-Flow



## Greater hydraulics, greater value

Wheatland's Mega-Flow is an engineered, light-wall steel sprinkler pipe that offers ID up to 7% larger than Schedule 10 and 11% larger than Schedule 40 for improved hydraulics. Mega-Flow saves freight, labor and installation costs with standard hanger spacing (15') and standard and custom lengths. With its proprietary mill coating, Mega-Flow is an excellent alternative to standard wall products so you can downsize your entire sprinkler system with the same or greater quality.

ID up to 7% larger than Schedule 10 and 11% larger than Schedule 40

Saves freight, labor and installation costs

Standard hanger spacing (15')

Available in standard lengths; custom lengths can be ordered

Roll groove available from mill inventory

Proprietary mill coating provides superior primer for painting

### TECHNICAL DATA

NPS	NOM ID	WT./FT. (LBS.)	WT./FT. H <sub>2</sub> O FILLED	PCS./LIFT	WT./LIFT 21'	WT./LIFT 24'	WT./LIFT 25'
1¼	1.530	1.108	1.904	61	1419	1622	1690
1½	1.740	1.556	2.586	61	1993	2278	2373
2	2.215	1.961	3.631	37	1524	1741	1814
2½	2.707	2.504	4.998	30	1578	1803	1878
3	3.316	3.349	7.090	19	1336	1527	1591
4	4.316	4.331	10.669	19	1728	1975	2057
6	6.395	8.000	21.900	10	1680	1920	2000

### SPECIFICATIONS

NPS	NOM OD	NOM ID		UL CRR*		MEGA-FLOW		
		Mega-Flow	Schedule 10	Schedule 40	Mega-Flow	Schedule 40	Nominal wt./ft.	Pcs./Lift
1¼	1.660	1.530	1.442	1.380	1.80	1.00	1.108	61
1½	1.900	1.740	1.682	1.610	2.64	1.00	1.556	61
2	2.375	2.215	2.157	2.067	2.14	1.00	1.961	37
2½	2.875	2.707	2.635	2.469	1.43	1.00	2.504	30
3	3.500	3.316	3.260	3.068	1.34	1.00	3.349	19
4	4.500	4.316	4.260	4.026	1.00	1.00	4.331	19
6	6.625	6.395	6.357	6.065	0.75	1.00	8.000	10

\* Calculated using Standard UL CRR formula, UL Fire Protection Directory, Category VIZY. The CRR is a ratio value used to measure the ability of a pipe to withstand corrosion. Threaded Schedule 40 steel pipe is used as the benchmark (value of 1.0).

#### Mega-Flow Meets or Exceeds These Standards:

- ASTM A795, Type E, Grade A
- UL and C-UL Listed and FM Approved for use with roll grooved, swage grooved, plain-end couplings and welded joints for wet, dry preaction and deluge systems
- FM Approved for roll grooved, plain-end and welded joints for wet systems
- NFPA 13 and NFPA 14

# Mega-Thread

## Greater hydraulics, greater value

Wheatland's Mega-Thread is an engineered, light-wall steel sprinkler pipe that offers ID 3.6% larger than Schedule 40 for superior flow. Mega-Thread saves costs in threadable applications and can be joined by screwed, grooved or plain-end fittings, or welded. With its proprietary mill coating, Mega-Thread is an excellent Schedule 40 alternative that threads smoothly and easily so you can downsize your entire sprinkler system with the same or greater quality.

ID 3.6% larger than  
Schedule 40

Saves costs in  
threadable applications

Superior flow  
characteristics

Can be joined by  
screwed, grooved  
or plain-end  
fittings, or welded

Threads smoothly  
and easily; requires  
no thread warning

Proprietary mill coating  
extends shelf life,  
makes painting quicker  
and easier

Approved for standard  
hanger spacing

### TECHNICAL DATA

NPS	NOM ID	WT./FT. (LBS.)	WT./FT. H <sub>2</sub> O FILLED	PCS./LIFT	WT./LIFT 21'	WT./LIFT 24'	WT./LIFT 25'
1	1.087	1.462	1.865	70	2149	2456	2559
1¼	1.416	1.989	2.674	51	2130	2435	2536
1½	1.650	2.370	3.297	44	2190	2503	2607
2	2.117	3.094	4.621	30	1949	2228	2321

### SPECIFICATIONS

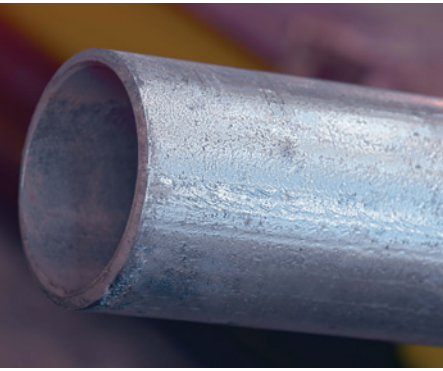
NPS	NOM OD	NOM ID		UL CRR*			MEGA-THREAD	
		Mega-Thread	Schedule 40	Mega-Thread	Schedule 40	L.W.T. Pipe	Nominal wt./ft.	Pcs./Lift
1	1.315	1.087	1.049	1.00	1.00	0.61	1.462	70
1¼	1.660	1.416	1.380	1.00	1.00	0.39	1.989	51
1½	1.900	1.650	1.610	1.00	1.00	0.31	2.370	44
2	2.375	2.117	2.067	1.00	1.00	0.25	3.094	30

\* Calculated using Standard UL CRR formula, UL Fire Protection Directory, Category VIZY. The CRR is a ratio value used to measure the ability of a pipe to withstand corrosion. Threaded Schedule 40 steel pipe is used as the benchmark (value of 1.0).

#### Mega-Thread Meets or Exceeds These Standards:

- ASTM A795, Type E, Grade A
- UL and C-UL Listed and FM Approved for wet, dry and preaction sprinkler systems
- FM Approved for use in wet systems
- Hot-dip galvanized finish meets FM requirements for dry systems
- NFPA 13 and NFPA 14
- Rated 300 psi working pressure

## GL Galvanized, Light Wall, Threadable



# Ideal for exposed, open areas

Wheatland's GL steel fire sprinkler pipe is an OD galvanized, lighter-wall, threadable product. The nominal OD provides improved hydraulics – resulting in an exceptional value.

Ideal for branch line use in wet, dry, preaction or deluge systems

Comparable mechanical strength to Schedule 40

Readily paintable galvanized exterior

Reduces freight and installation costs

### TECHNICAL DATA

NPS	NOM ID	WT./FT. (LBS.)	WT./FT. H <sub>2</sub> O FILLED	PCS./LIFT	WT./LIFT 21'	WT./LIFT 24'	WT./LIFT 25'
1	1.103	1.370	1.701	91	2618	2992	3117
1¼	1.448	1.761	2.365	61	2256	2578	2686
1½	1.688	2.033	2.875	61	2604	2976	3100
2	2.153	2.686	4.142	37	2087	2385	2485

### SPECIFICATIONS

NPS	NOM ID		UL THREADED CRR*			GL	
	GL	Schedule 40	GL	Schedule 40	Mega-Thread	Nominal wt./ft.	Pcs./Lift
1	1.103	1.049	0.61	1.00	1.00	1.370	91
1¼	1.448	1.380	0.39	1.00	1.00	1.761	61
1½	1.688	1.610	0.31	1.00	1.00	2.033	61
2	2.153	2.067	0.25	1.00	1.00	2.686	37

\* Calculated using Standard UL CRR formula, UL Fire Protection Directory, Category VIZY. The CRR is a ratio value used to measure the ability of a pipe to withstand corrosion. Threaded Schedule 40 steel pipe is used as the benchmark (value of 1.0).

#### GL Meets or Exceeds These Standards:

- ASTM A795, Type E, Grade A for fire sprinkler applications up to 300 psi working pressure
- UL and C-UL Listed and FM Approved for wet, dry and preaction deluge systems
- FM Approved for use in wet systems
- Threaded and welded fittings are approved in accordance with NFPA 13

## MLT Black, Light Wall, Threadable



# A smooth, customized look

Wheatland's MLT is a black-coated, light-wall engineered product, with a nominal OD and reduced wall thickness that provide improved hydraulics.

### TECHNICAL DATA

NPS	NOM ID	WT./FT. (LBS.)	WT./FT. H <sub>2</sub> O FILLED	PCS./LIFT	WT./LIFT 21'	WT./LIFT 24'	WT./LIFT 25'
1	1.103	1.370	1.701	91	2618	2992	3117
1¼	1.448	1.761	2.365	61	2256	2578	2686
1½	1.688	2.080	2.875	61	2604	2976	3100
2	2.153	2.630	4.142	37	2087	2385	2485

Ideal for previously installed systems and expansions

Saves freight and installation costs

As mechanically strong as Schedule 40 pipe

Easily paintable for a customized look

Can be used in wet, dry, preaction and deluge systems

Can be joined with threaded couplings, roll grooved or plain-end couplings, or welded

### SPECIFICATIONS

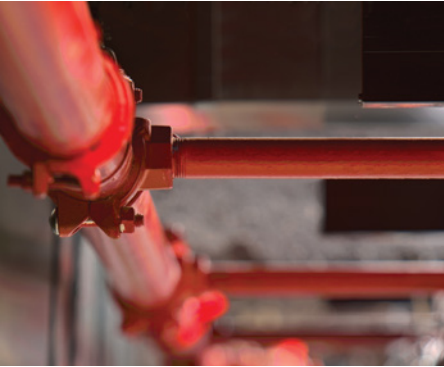
NPS	NOM ID		UL THREADED CRR*			MLT	
	MLT	Schedule 40	MLT	Schedule 40	Mega-Thread	Nominal wt./ft.	Pcs./Lift
1	1.103	1.049	0.61	1.00	1.00	1.370	91
1¼	1.448	1.380	0.39	1.00	1.00	1.761	61
1½	1.688	1.610	0.31	1.00	1.00	2.033	61
2	2.153	2.067	0.25	1.00	1.00	2.686	37

\* Calculated using Standard UL CRR formula, UL Fire Protection Directory, Category VIZY. The CRR is a ratio value used to measure the ability of a pipe to withstand corrosion. Threaded Schedule 40 steel pipe is used as the benchmark (value of 1.0).

#### MLT Meets or Exceeds These Standards:

- ASTM A795, Type E, Grade A for fire sprinkler applications up to 300 psi working pressure
- UL and C-UL Listed and FM Approved for wet, dry and preaction deluge systems
- FM Approved for use in wet systems
- Threaded and welded fittings are approved in accordance with NFPA 13

## Schedule 10 and Schedule 40



# High quality, high performance

Wheatland's Schedule 10 and Schedule 40 steel fire sprinkler pipe are subjected to the toughest possible testing to ensure the highest possible quality – not to mention reliable, long-lasting performance.

### TECHNICAL DATA

NPS	NOM ID	WT./FT. (LBS.)	WT./FT. H <sub>2</sub> O FILLED	PCS./LIFT	WT./LIFT 21'	WT./LIFT 24'	WT./LIFT 25'
1¼	1.442	1.807	2.514	61	2315	2645	2756
1½	1.682	2.087	3.049	61	2673	3055	3183
2	2.157	2.640	4.222	37	2051	2344	2442
2½	2.635	3.534	5.895	30	2226	2544	2651
3	3.260	4.336	7.949	19	1730	1977	2060
4	4.260	5.619	11.789	19	2242	2562	2669
5	5.295	7.780	17.309	13	2124	2427	2529
6	6.357	9.298	23.038	10	1953	2232	2325
8	8.249	16.960	40.086	7	2493	2849	2968

Proprietary mill coating ensures clean, corrosion-resistant surface

Outperforms and outlasts standard lacquer-coated pipe

Easily painted, without special preparation

Available with hot-dip galvanizing

Also available in black

### SCHEDULE 10 SPECIFICATIONS

NPS	NOM OD		NOM ID		NOMINAL WALL		NOMINAL WEIGHT		UL CRR*	PIECES Lift
	in.	mm	in.	mm	in.	mm	lbs./ft.	kg/m		
1¼	1.660	42.2	1.442	36.6	0.109	2.77	1.81	2.69	7.3	61
1½	1.900	48.3	1.682	42.7	0.109	2.77	2.09	3.11	5.8	61
2	2.375	60.3	2.157	54.8	0.109	2.77	2.64	3.93	4.7	37
2½	2.875	73.0	2.635	66.9	0.120	3.05	3.53	5.26	3.5	30
3	3.500	88.9	3.260	82.8	0.120	3.05	4.34	6.46	2.6	19
4	4.500	114.3	4.260	108.2	0.120	3.05	5.62	8.37	1.6	19
5	5.563	141.3	5.295	134.5	0.134	3.40	7.78	11.58	1.5	13
6	6.625	168.3	6.357	161.5	0.134	3.40	9.30	13.85	1.0	10
8	8.625	219.1	8.249	209.5	0.188	4.78	16.96	25.26	2.1	7

\* Calculated using Standard UL CRR formula, UL Fire Protection Directory, Category VIZY. The CRR is a ratio value used to measure the ability of a pipe to withstand corrosion. Threaded Schedule 40 steel pipe is used as the benchmark (value of 1.0).

### WEIGHTS AND DIMENSIONS

NOMINAL SIZE	OD in.	SCHEDULE 40		
		Wall Inches	Wt. lbs./ft.	Wt./Ft. H <sub>2</sub> O Filled
1	1.315	0.133	1.68	2.055
1¼	1.660	0.140	2.27	2.922
1½	1.900	0.145	2.72	3.602
2	2.375	0.154	3.66	5.109
2½	2.875	0.203	5.80	7.871
3	3.500	0.216	7.58	10.783
3½	4.000	0.226	9.12	—
4	4.500	0.237	10.80	16.311
5	5.563	0.258	14.63	23.262
6	6.625	0.280	18.99	31.498

### SCHEDULE 40 SPECIFICATIONS

NPS	NOM OD		NOM ID		NOMINAL WALL		NOMINAL WEIGHT		UL CRR*	PIECES Lift
	in.	mm	in.	mm	in.	mm	lbs./ft.	kg/m		
1	1.315	33.4	1.049	26.6	0.133	3.38	1.68	2.50	1.00	70
1¼	1.660	42.2	1.380	35.1	0.140	3.56	2.27	3.39	1.00	51
1½	1.900	48.3	1.610	40.9	0.145	3.68	2.72	4.05	1.00	44
2	2.375	60.3	2.067	52.5	0.154	3.91	3.66	5.45	1.00	30

\* Calculated using Standard UL CRR formula, UL Fire Protection Directory, Category VIZY. The CRR is a ratio value used to measure the ability of a pipe to withstand corrosion. Threaded Schedule 40 steel pipe is used as the benchmark (value of 1.0).

#### Schedule 10 and Schedule 40 Meet or Exceed These Standards:

- ASTM A135, Type E, Grade A (Schedule 10)
- ASTM A795, Type E, Grade A (Schedule 40)
- UL and C-UL Listed
- FM Approved
- NFPA 13



## WST Schedule 5 Light Wall

# A high-strength, light-wall sprinkler pipe

Wheatland's Super Tube (WST) is a light-wall Schedule 5 product that's UL and C-UL Listed, and FM Approved for use with standard roll grooved and welded joining methods.



Finished in black

Large ID for better hydraulics and downsizing tubing requirements

Super lightweight

Outstanding hydraulics

Fast installation

Approved for use with flexible pipe couplings for the roll grooved joining method

High corrosion-resistance ratios

Standard hanger spacing

### TECHNICAL DATA

NPS	NOM ID	WT./FT. (LBS.)	WT./FT. H <sub>2</sub> O FILLED	PCS./LIFT	WT./LIFT 21'	WT./LIFT 24'	WT./LIFT 25'
1	1.185	0.869	1.346	91	1661	1898	1977
1¼	1.530	1.108	1.904	61	1419	1622	1690
1½	1.770	1.275	2.340	61	1633	1867	1944
2	2.245	1.605	3.319	37	1247	1425	1485

### SPECIFICATIONS

NPS	NOM OD	NOM ID		UL CRR*		WST	
		WST	Schedule 40	WST	Schedule 40	Nominal wt./ft.	Pcs./Lift
1	1.315	1.185	1.049	2.17	1.00	0.87	91
1¼	1.660	1.530	1.380	1.40	1.00	1.11	61
1½	1.900	1.770	1.610	1.11	1.00	1.27	61
2	2.375	2.245	2.067	0.90	1.00	1.60	37

\* Calculated using Standard UL CRR formula, UL Fire Protection Directory, Category VIZY. The CRR is a ratio value used to measure the ability of a pipe to withstand corrosion. Threaded Schedule 40 steel pipe is used as the benchmark (value of 1.0). The average CRR values shown above are higher than any threaded sprinkler pipe (except 2). WST's larger ID can often lead to superior hydraulics and down-sizing of pipe systems.

#### WST Meets or Exceeds These Standards:

- ASTM A795/ASTM A135
- UL and C-UL Listed and FM Approved
- New York City MEA #259-91-M
- Dade County, Florida, 92-1210



700 South Dock Street  
Sharon, PA 16146

800.257.8182  
info@wheatland.com  
wheatland.com



**Corporate Office**  
227 West Monroe Street  
Suite 2600  
Chicago, IL 60606  
312.275.1600  
info@zekelman.com  
zekelman.com

### About Wheatland Tube

Wheatland Tube, a division of Zekelman Industries, produces a wide range of steel tubular products, including standard steel pipe, galvanized mechanical tubing, fence framework, fire sprinkler pipe, electrical conduit, elbows, couplings and nipples.

For more information, contact Wheatland Tube at:

**800.257.8182** or **info@wheatland.com**

Or, visit our website at [wheatland.com](http://wheatland.com)

Follow us on:



[twitter.com/WheatlandTube](https://twitter.com/WheatlandTube)



[linkedin.com/company/zekelman-industries](https://linkedin.com/company/zekelman-industries)



[youtube.com/ZekelmanIndustries](https://youtube.com/ZekelmanIndustries)



[wheatland.com/blog](http://wheatland.com/blog)