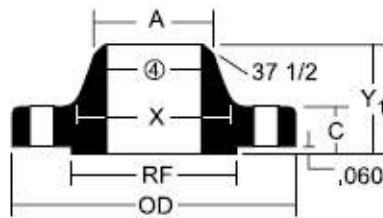
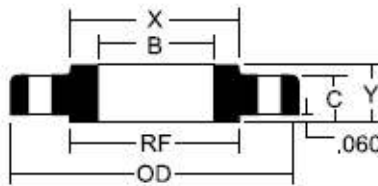




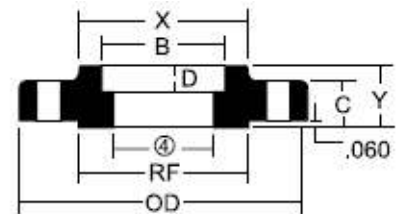
## IPS INDUSTRIAL CLASS 300 FLANGES



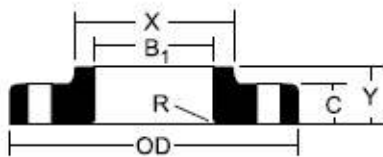
**Weld Neck**



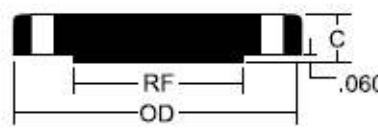
**Slip-On**



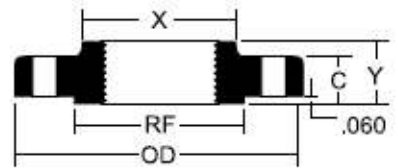
**Socket Weld**



**Lap Joint**



**Blind**



**Threaded**

NOM PIPE SIZE	CLASS 150*												BOLT HOLE QTY/DIA
	OD	C	X	A	Y	Y <sub>1</sub>	B	B <sub>1</sub>	R	D	RF	BOLT CIRCLE DIA.	
1/2	3.75	0.65	1.50	0.84	0.88	2.06	0.88	0.90	0.12	0.38	1.38	2.62	4/0.62
3/4	4.62	0.62	1.88	1.05	1.00	2.25	1.09	1.11	0.12	0.44	1.69	3.25	4/0.75
1	4.88	0.69	2.12	1.32	1.06	2.44	1.36	1.38	0.12	0.50	2.00	3.50	4/0.75
1-1/4	5.25	0.75	2.50	1.66	1.06	2.56	1.70	1.72	0.19	0.56	2.50	3.88	4/0.75
1-1/2	6.12	0.81	2.75	1.90	1.19	2.69	1.95	1.97	0.25	0.62	2.88	4.50	4/0.88
2	6.50	0.88	3.31	2.38	1.31	2.75	2.44	2.46	0.31	0.69	3.62	5.00	8/0.75
2-1/2	7.50	1.00	3.94	2.88	1.50	3.00	2.94	2.97	0.31	0.75	4.12	5.88	8/0.88
3	8.25	1.12	4.62	3.50	1.69	3.12	3.57	3.60	0.38	0.81	5.00	6.62	8/0.88
4	10.00	1.25	5.75	4.50	1.88	3.38	4.57	4.60	0.44	0.94***	6.19	7.88	8/0.88
5	11.00	1.38	7.00	5.56	2.00	3.88	5.66	5.69	0.44	0.94***	7.31	9.25	8/0.88
6	12.50	1.44	8.12	6.63	2.06	3.88	6.72	6.75	0.50	1.06***	8.50	10.62	12/0.88
8	15.00	1.62	10.25	8.63	2.44	4.38	8.72	8.75	0.50	1.25***	10.62	13.00	12/1.00
10	17.50	1.88	12.62	10.75	2.62**	4.62	10.88	10.92	0.50	1.31***	12.75	15.25	16/1.12
12	20.50	2.00	14.75	12.75	2.88**	5.12	12.88	12.92	0.50	1.56***	15.00	17.75	16/1.25
14	23.00	2.12	16.75	14.00	3.00**	5.62	14.14	14.18	0.50	1.63***	16.25	20.25	20/1.25
16	25.50	2.25	19.00	16.00	3.25**	5.75	16.16	16.19	0.50	1.75***	18.50	22.50	20/1.38
18	28.00	2.38	21.00	18.00	3.50**	6.25	18.18	18.20	0.50	1.94***	21.00	24.75	24/1.38
20	30.50	2.50	23.12	20.00	3.75**	6.38	20.20	20.25	0.50	2.12***	23.00	27.00	24/1.38
24	36.00	2.75	27.62	24.00	4.19**	6.62	24.25	24.25	0.50	2.50***	27.25	32.00	24/1.62

All dimensions are in inches

\* In accordance with ASME/ANSI B16.5

\*\* Not applicable to lap joints

Lap joint length = 10 - 3.75

12 - 4.00

14 - 4.38

16 - 4.75

18 - 5.12

20 - 5.50

24 - 6.00

\*\*\* Industry Practice

\*\*\*\* Bore of WN and SW to be specified