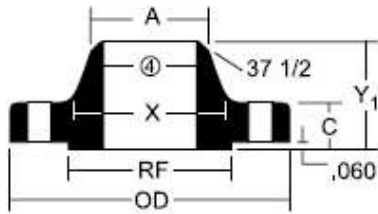
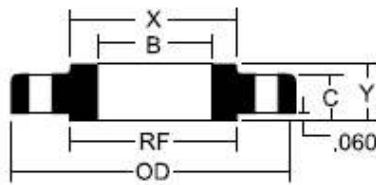




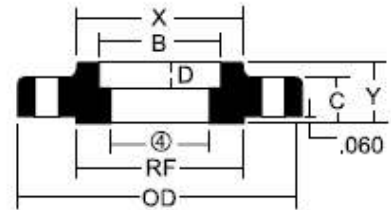
IPS INDUSTRIAL CLASS 150 FLANGES



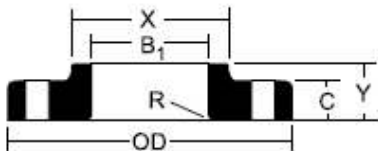
Weld Neck



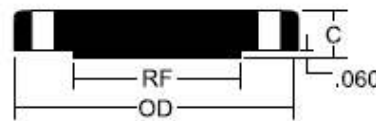
Slip-On



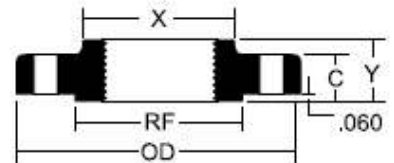
Socket Weld



Lap Joint



Blind



Threaded

NOM PIPE SIZE	CLASS 150*												BOLT CIRCLE DIA.	BOLT HOLE QTY/DIA
	OD	C	X	A	Y	Y ₁	B	B ₁	R	D	RF			
1/2	3.50	0.44	1.19	0.84	0.62	1.88	0.88	0.90	0.12	0.38	1.38	2.38	4/0.62	
3/4	3.88	0.50	1.50	1.05	0.62	2.06	1.09	1.11	0.12	0.44	1.69	2.75	4/0.62	
1	4.25	0.56	1.94	1.32	0.69	2.19	1.36	1.38	0.12	0.50	2.00	3.12	4/0.62	
1-1/4	4.62	0.62	2.31	1.66	0.81	2.25	1.70	1.72	0.19	0.56	2.50	3.50	4/0.62	
1-1/2	5.00	0.69	2.56	1.90	0.88	2.44	1.95	1.97	0.25	0.62	2.88	3.88	4/0.62	
2	6.00	0.75	3.06	2.38	1.00	2.50	2.44	2.46	0.31	0.69	3.62	4.75	4/0.75	
2-1/2	7.00	0.88	3.56	2.88	1.12	2.75	2.94	2.97	0.31	0.75	4.12	5.50	4/0.75	
3	7.50	0.94	4.25	3.50	1.19	2.75	3.57	3.60	0.38	0.81	5.00	6.00	4/0.75	
4	9.00	0.94	5.31	4.50	1.31	3.00	4.57	4.60	0.44	0.94***	6.19	7.50	4/0.75	
5	10.00	0.94	6.44	5.56	1.44	3.50	5.66	5.69	0.44	0.94***	7.31	8.50	8/0.88	
6	11.00	1.00	7.56	6.63	1.56	3.50	6.72	6.75	0.50	1.06***	8.50	9.50	8/0.88	
8	13.50	1.12	9.69	8.63	1.75	4.00	8.72	8.75	0.50	1.25***	10.62	11.75	8/0.88	
10	16.00	1.19	12.00	10.75	1.94	4.00	10.88	10.92	0.50	1.31***	12.75	14.25	12/1.00	
12	19.00	1.25	14.38	12.75	2.19	4.50	12.88	12.92	0.50	1.56***	15.00	17.00	12/1.00	
14	21.00	1.38	15.75	14.00	2.25**	5.00	14.14	14.18	0.50	1.63***	16.25	18.75	12/1.12	
16	23.50	1.44	18.00	16.00	2.50**	5.00	16.16	16.19	0.50	1.75***	18.50	21.25	16/1.12	
18	25.00	1.56	19.88	18.00	2.69**	5.50	18.18	18.20	0.50	1.94***	21.00	22.75	16/1.25	
20	27.50	1.69	22.00	20.00	2.88**	5.69	20.20	20.25	0.50	2.12***	23.00	25.00	16/1.25	
24	32.00	1.88	26.12	24.00	3.25**	6.00	24.25	24.25	0.50	2.50***	27.25	29.50	20/1.38	

All dimensions are in inches

* In accordance with ASME/ANSI B16.5

** Not applicable to lap joints

Lap joint length = 14 - 3.12

16 - 3.44

18 - 3.81

20 - 4.06

24 - 4.38

*** Industry Practice

**** Bore of WN and SW to be specified